



THE UNIVERSITY OF
MELBOURNE

ARCHITECTURAL DESIGN COMPETITION

NEW BUILDING FOR THE
FACULTY OF ARCHITECTURE
BUILDING AND PLANNING





Figure 1. Collaborative Methodology

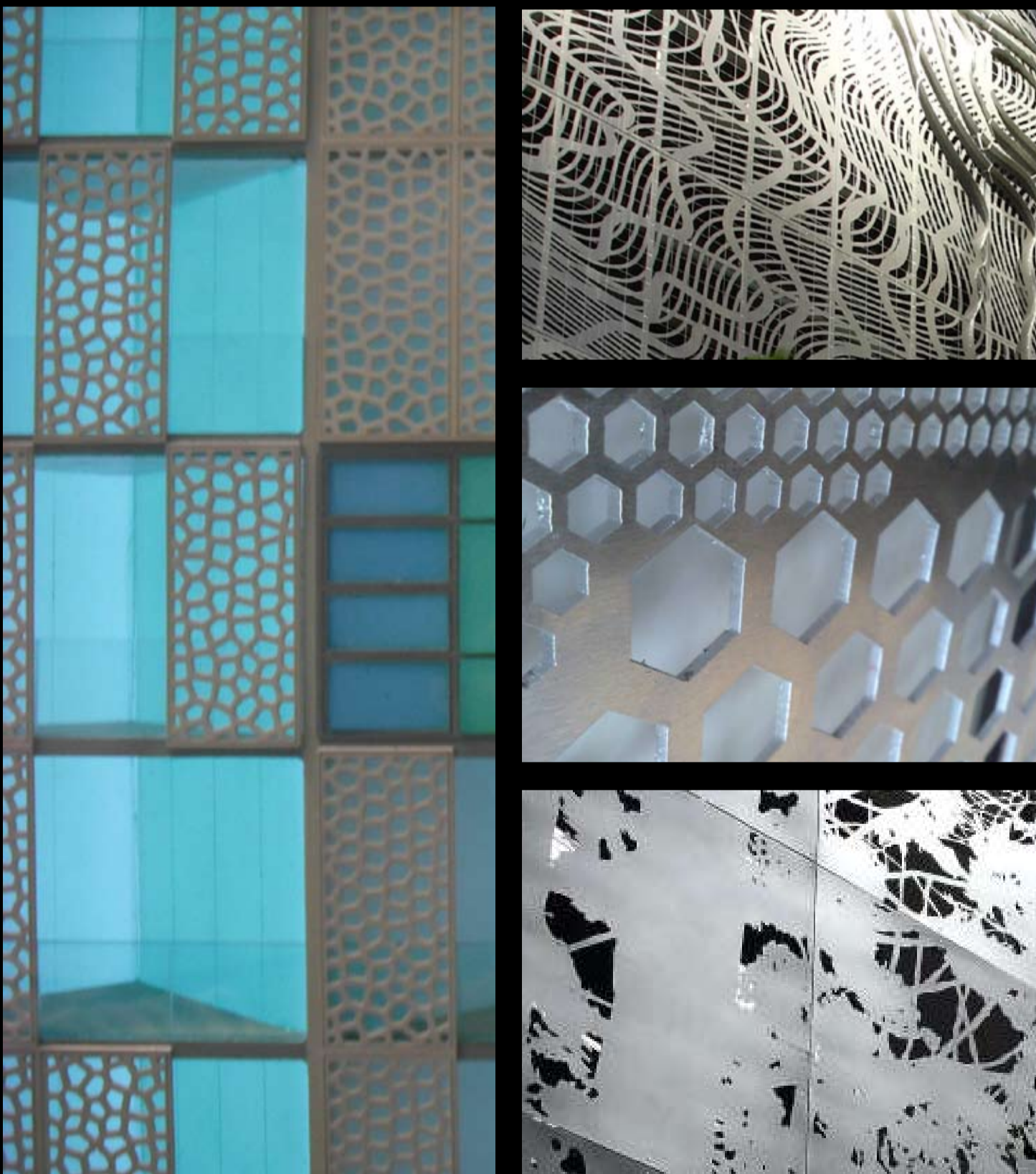


Figure 2. Triptych Project: Research and Experimentation

1.0 INTRODUCTION

Nettletontribe has prepared this EXPRESSION OF INTEREST in response to the University of Melbourne's invitation to design a new facility for the Faculty of Architecture, Building and Planning. We look forward to collaborating with the University, the Faculty, the Staff and Students to deliver a design that represents the aspirational objectives all parties.

1.1 Architectural Profile

Nettletontribe architects is an established practice since 1971 with offices in Sydney and Brisbane with a combined staff of over 70 persons. Our core experience covers residential, commercial, industrial, retail, hospitality and University projects. Nettletontribe's core values of design excellence, project delivery and firm commitment to satisfy clients briefs has enabled us to initiate and complete various successful projects throughout Australia. We have been recognised by the industry, peer group and recent publications in monument and indesign. <http://www.nettletontribe.com.au>

2.0 BUILT PEDAGOGY

Nettletontribe believes the project is a unique technological and cultural vehicle for the teaching aspirations of the University of Melbourne, Melbourne School of Design and Faculty of Architecture, building and Planning. Furthermore the built form will allow greater communication with the wider community by promoting the transparency of the faculty's activities.

2.1 Methodology

The approach that Nettletontribe takes with all projects is to listen, communicate, collaborate and interact with all levels of the client groups and project team. We believe that through this approach all possibilities and outcomes can be explored and tested resulting in an outcome that is richer through that process. The core methodology design principles we are committed to are:

- Collaborative consultative approach with the client
- Collaborative and interactive approach with all project team members
- Investigative design research to find appropriate design solutions
- Prototyping and modelling of key aspects of the project to test design decisions

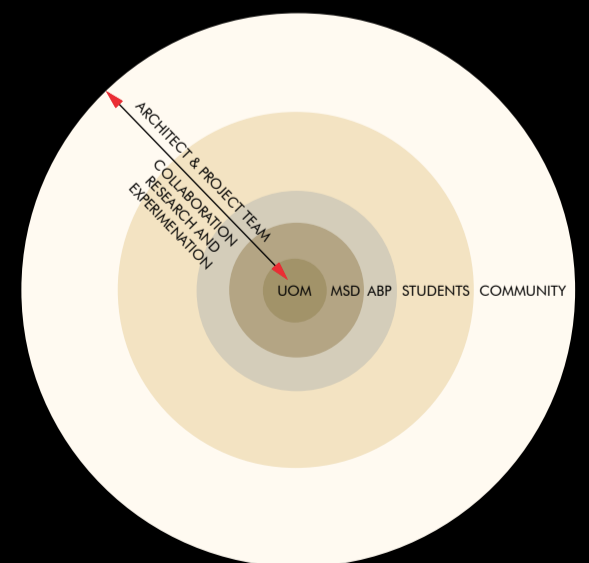
2.2 Example Project

**Triptych Project Melbourne Value \$110 million
Completion 2010:**

Designed by Nettletontribe, the triangular residential development, located opposite the Melbourne Art Gallery and Melbourne Ballet Centre, comprises an elegant interconnected tower of 24 levels incorporating planted atriums, rising from a 5 level podium. The tower's facade and podium have been designed in collaboration with Melbourne artist, Robert Owen, as an integrated art concept.

The art concept underscores the building's links with its location and context in the arts precinct. This is further reinforced at the building's street level, where a cafe, restaurant, bar, deli, gallery and collaborative space provide the opportunity for residents to mix with the surrounding arts community.

The building's external materials will incorporate operable coloured glass windows and panels combined with perforated metal, acrylic domes and pre-cast artwork. The elements are composed to create a unique development with art as its' core concept. Our core methodology design principles have been committed to in this project to achieve a successful outcome. Refer to fig 1,2,11 for images.



BUILT PEDAGOGY

EOI: FACULTY OF ARCHITECTURE,
BUILDING AND PLANNING

May 2009

Page 2

nettletontribe



Figure 3. Lifestyle Working-Brookvale Project Sydney



Figure 4. Lifestyle Working-Brookvale Project Sydney

3.0 THE ACADEMIC ENVIRONMENT

Nettletontribe has designed numerous working environments and we have a firm belief that the built environment can inspire and influence people. In our ever-changing world it is fundamental that our working environments, rather than remaining static, become flexible environments that offer different levels of opportunity for privacy and interaction. The creation of a holistic cultural built environment will inspire innovation and collaboration to attract people from various academic backgrounds.

3.1 Methodology

Nettletontribe will facilitate, collaborate and consult with all levels of the academic staff to provide an inspirational and innovative environment with the core principle below.

- Collaborative consultative communication with the University of Melbourne
- Collaborative consultative approach with the Melbourne School of Design
- Detailed consultative and interactive spatial and functional brief analysis with user groups of the Faculty of Architecture, Building and Planning.
- Workshop ideas with all user groups to arrive at optimal solutions.

3.2 Example Project

Lifestyle Working Brookvale Project Sydney Value \$35 million Completed 2008:

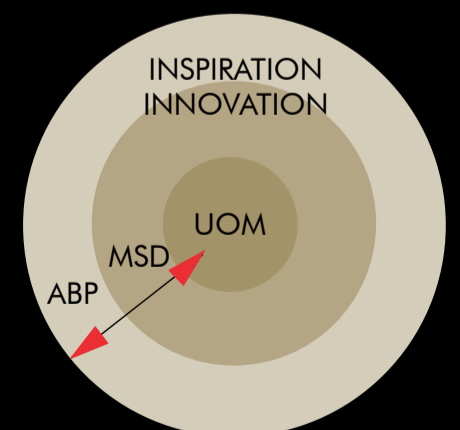
This innovative development comprises approx. 12,400sqm of strata office space. Planned over three levels, the simple rectangular forms, with a central semi-enclosed 'street' is covered from the entry to the pool/cafe and extends through into an open courtyard. The arrival space is roofed and semi enclosed at either end to allow a natural flow of air between the buildings. The upper levels are linked by a series of bridges and walkways to access the individual units. These bridges also provide collaborative/community areas for occupants of the building. Setting a new benchmark for strata commercial space, the development includes sustainable design features such as natural ventilation, water harvesting, passive energy solutions and optimum control options for individual owners and occupiers. Refer to fig 3,4 & 9 for project images.

Key design objectives achieved:

- Integrated lifestyle and working environments
- Flexible working sustainable environments connected to atriums and outdoor communication spaces
- Collaborative/community areas for occupants of the building



Figure 5. Sonic Health Care Labs: Collaborative Space



THE ACADEMIC ENVIRONMENT

nettletontribe

EOI: FACULTY OF ARCHITECTURE,
BUILDING AND PLANNING

May 2009

Page 3

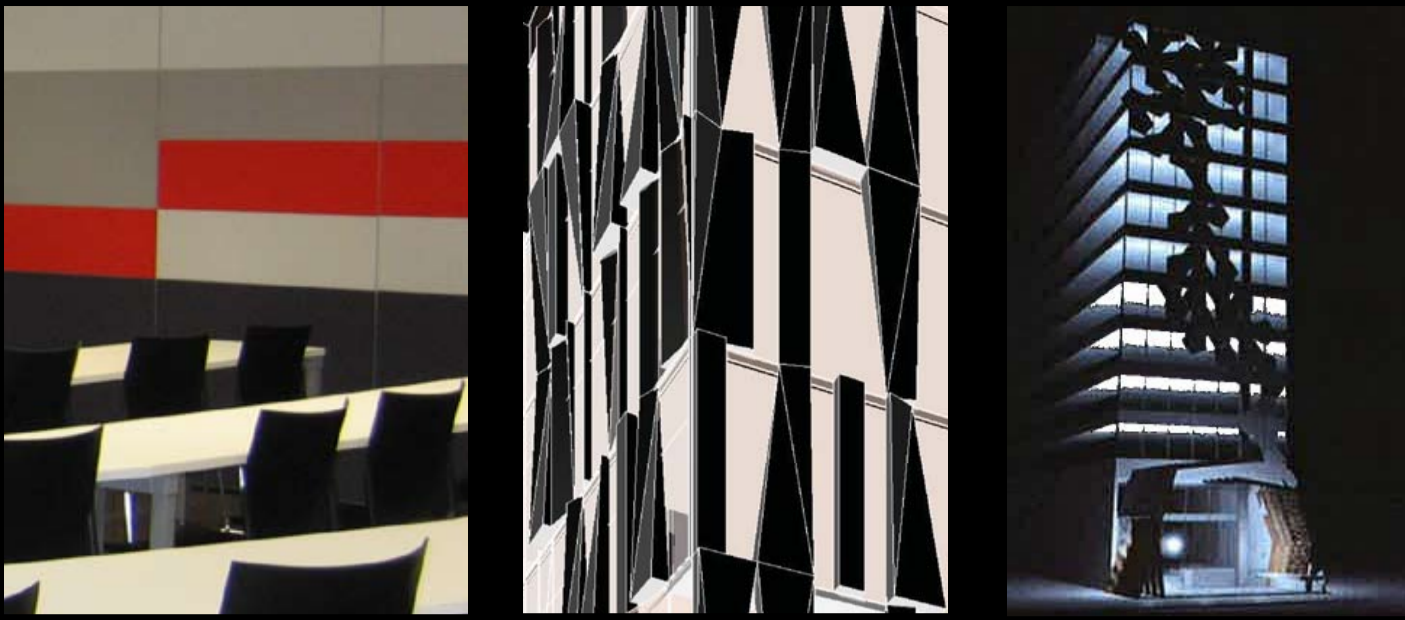


Figure 6. James Cook University QLD



Figure 7. Sarina Russo Schools of Australia Refurbishment QLD

4.0 THE DESIGN STUDIO

Nettletontribe acknowledges the importance and significance the new Faculty of Architecture, Building and Planning will have for the staff and students. We aim to provide studio spaces that are flexible and functional for current and future activities that will be universal and engaging to create an interactive contemplative culture.

4.1 Methodology

Nettletontribe understands the critical need for experiential and functional spaces in which staff and students can create an interactive and enriching studio culture. The core principles for collaboration to achieve this are:

- Consult with staff and students to assess current functional needs and short comings and seek improvements to address these.
- Provide flexible spaces that address current and future studio needs.
- Research and explore technological tools and design methods of integration to achieve studios that reflect current digital advances in teaching and student engagement.

4.2 Example Projects

James Cook University, Brisbane Campus Extension Value \$0.5 million Completed 2008:

Additional floor space of approx. 400sqm for classrooms & lecture theatre. Refer to fig 6 for images.

Sarina Russo Schools of Australia Refurbishment Concept:

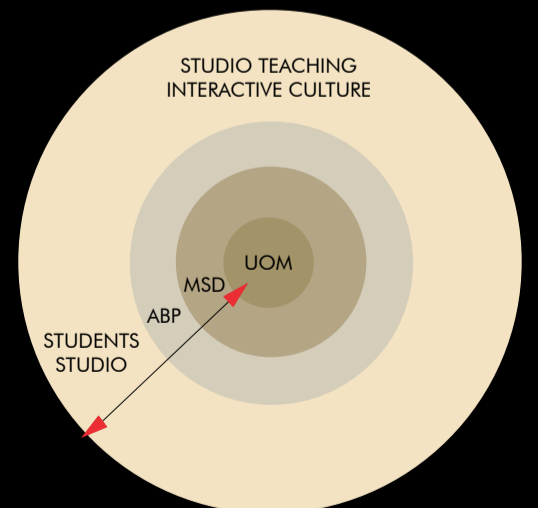
Refurbishment of existing school facilities, 13 floors x 400sqm per floor. Refer to fig 7 for images.

Sonic Health Care Laboratories Sydney Value \$60 million Completed 2008:

Sonic Healthcare's new laboratory and Headquarters building is a benchmark for laboratory facilities by encapsulating sustainable principles, the natural environment and lifestyles of its employees. The 6 Level building incorporates a main laboratory lower, ground level, an upper ground level incorporating main entrance lobby, café and seminar theatre space; three levels of office/laboratory floors and three levels of basement parking and warehousing. The project features innovative technologically advanced working environments that are visually interactive and transparent whilst also allowing the functional requirements of privacy and acoustics to be maintained. Refer to fig 5 & 16 for images.

Key design objectives achieved that can be universally transferred to a design studio environment:

- Creative research environment
- Flexible working environment
- Integration of specialised technology to improve functionality and communication.



THE DESIGN STUDIO

EOI: FACULTY OF ARCHITECTURE,
BUILDING AND PLANNING

May 2009

Page 4

nettletontribe



Figure 8. Lifestyle Working- Brookvale Project Sydney



Figure 10. University of Technology Faculty of Design, Architecture and Building

5.0 THE LIVING BUILDING

Nettletontribe has extensive experience and knowledge with the design of buildings incorporating environmental systems. Nettletontribe recently completed the first 6 Star Green Star rated office building in NSW and we are at the forefront of expertise in this area.

5.1 Methodology

Nettletontribe recognises the opportunity the project represents as a current model for sustainable campus development. The key issues we recognise are:

- Integration of building initiatives with overall campus sustainability objectives.
- Explorations of optimal ESD building initiatives that practically achieve and demonstrate the environmental systems of the building.

5.2 Example Projects

Workplace 6 Sydney Value \$60 million Completed 2009:

Workplace 6, located on Sydney harbour, sets a new benchmark for Sydney commercial property. The building achieves a 6 star Green Star Rating and five star + 20% ABGR rating, the highest standard attainable. This standard requires commitment to the highest level of sustainable management. The building will provide ESD initiatives including a productive workplace with thermal comfort, fresh air intake, cogeneration, blackwater treatment, water harvesting and harbour water heat exchange.

- First 6 Star Green Star rating in NSW

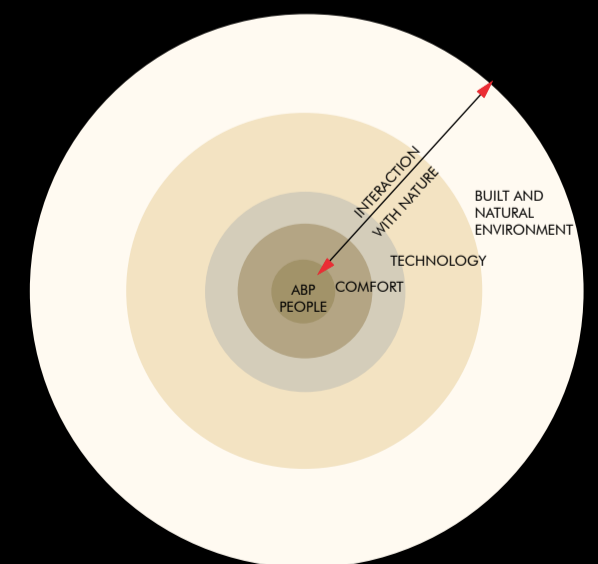
UTS Faculty of Design, Architecture and Building Size 24,000m2 Completion 2010:

Nettletontribe was selected through a competition process to design 7 Stories of teaching infill extensions and 13 stories of student accommodation above the Faculty of Design, Architecture and Building. The design evolved through extensive consultation with the University and incorporates ESD initiatives that will achieve a 5 star Green Star Rating. Refer to fig 10 for images. Key design objectives achieved are:

- Designed 5 Star Green Star rating will be achieved
- Successful Design Integration of existing building and new building with minimal future operational disruptions to Faculty
- Revitalisation of surrounding urban public spaces and reconnection with surrounding campus



Figure 9. Workplace 6



THE LIVING BUILDING

EOI: FACULTY OF ARCHITECTURE,
BUILDING AND PLANNING

May 2009

Page 5

nettletontribe



Figure 11. Triptych Project Melbourne

6.0 CAPABILITY AND PROCESS

Nettleontribe has designed and successfully completed projects throughout Australia.

6.1 Example Projects Completed and under construction:

Australian National University 21 Value \$60 million Completed 2009:

Student Accommodation Completed 2008 for ANU. Refer to fig 12 & 13 for Images.

- Collaboration with University as core client.
- Delivery within tight program and budget.
- Design outcome successfully satisfied universities and operator requirements.

Triptych Project Melbourne Value \$110 million Under Construction 2009:

Currently under construction in Melbourne for Stable Properties

- Experience with delivery process for projects located in Melbourne.

UTS Faculty of Design, Architecture & Building Size 24,000m2 Construction Start 2009:

DA lodged and under consideration. Construction to commence 2009.

- Experience with Part 3A and PPP delivery process undertaken with project consortium and University.
- Working within tight design development program and budgets.
- Demonstrated Communication with University Project Control and User Groups
- Demonstrated Design Excellence and Successful Design collaboration with University

Other University Groups we are currently liaising with:

Queensland University of Technology, James cook University, Monash University & Deakin University

6.2 Project Team

Nettleontribe is a diverse team of skilled and experienced Architects and Interior designers. Our experience offers an intelligent approach to innovation in design and project delivery. The project team understand the importance of the management of cost, time and quality necessary to achieve a successful project. The project core team that will facilitate the initial phase of the project and their experience is outlined below:

- **Trevor Hamilton (director)**- Experienced with understanding University needs and optimal project delivery.
- **Jeremy Bishop (director)**-Design director focused on collaborative design processes undertaken with University Institutions. Key design director for UTS, ANU, Triptych, Brookvale and Sonic Healthcare projects.
- **Michael Lam (associate architect)**-Project Design Architect, recently collaborated with UTS and has been involved with major projects in Australia and Overseas. Collaborated with Renzo Piano on Aurora Place and various Olympic Projects such as the Water Cube Beijing.
- **Gary Lo (associate architect)**-Project Delivery Architect, Collaborated with ANU and intrinsically understands project management and delivery.
- **Selina Chu (associate interior designer)**-Senior interior designer, focused on innovative interior design and spatial planning.
- NT will also draw upon other experienced staff where required.

6.3 Client References

Nettleontribe is working with various organisations in the public and private sector. A summary of key and recent clients is noted below, our presence with various University institutions around Australia outlines our commitment to the educational community.

Australian National University:

David Lamont

phone (02) 6125 0550 mobile 0438 727 772

University of Technology Sydney:

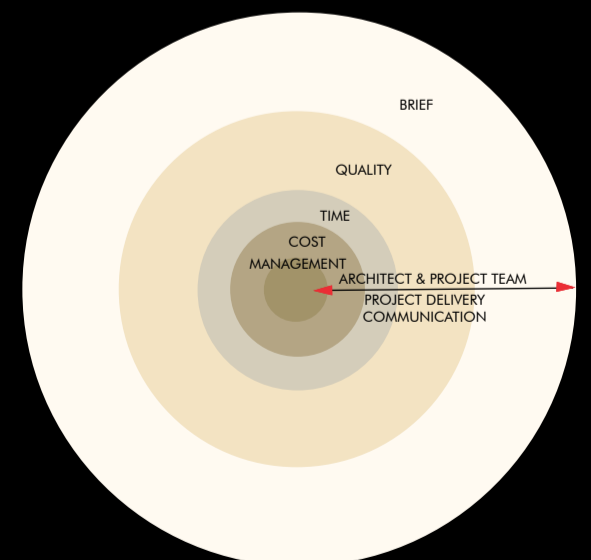
Clive Gunton-Manager, Planning & Design Review Clive.Gunton@uts.edu.au

Facilities Management Unit University of Technology, Sydney phone (02) 9514 3134 mobile 0439 072 730

Stable Properties Pty Ltd Lifestyle working:

Danny Flynn-Managing Director

Stable Properties Pty Ltd Lifestyle Working Phone (02) 9091 0888



CAPABILITY AND PROCESS

EOI:FACULTY OF ARCHITECTURE,
BUILDING AND PLANNING

May 2009

Page 6

nettleontribe



THE UNIVERSITY OF
MELBOURNE

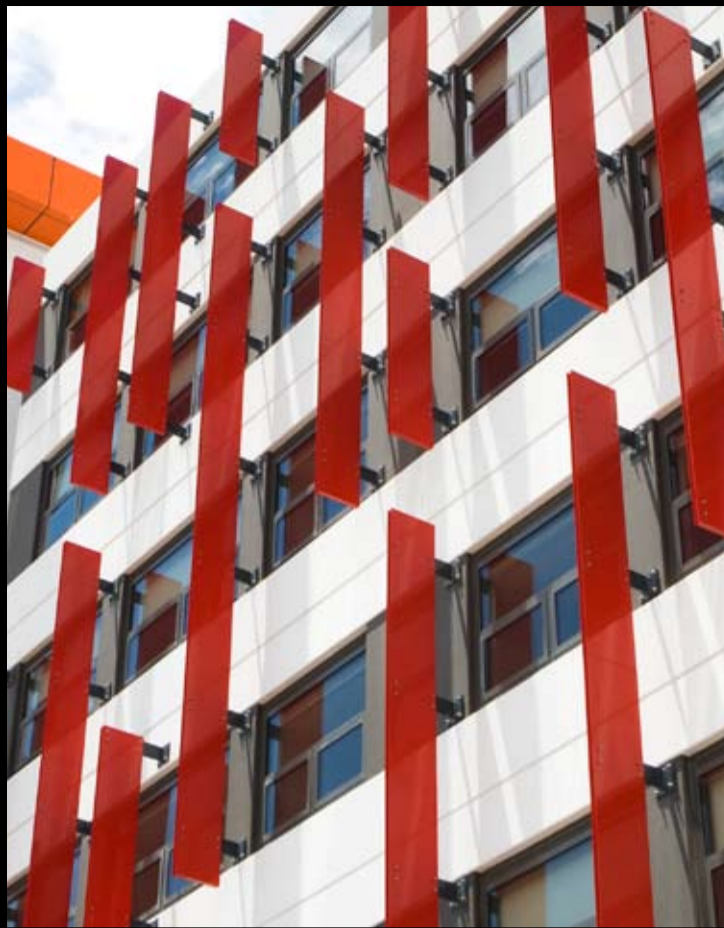


Figure 12. Australian National University 21 Canberra



Figure 13. Australian National University 21 Canberra



Figure 14. Barrack Street



Figure 15. Waratah Mills-Adaptive Reuse



Figure 16. Sonic Health Care Labs

7.0 MERIT

Nettletontribe has received awards and recognition in publications for projects of various different sizes and briefs. Particularly we have been recognised for our ability to reinterpret programs in an innovative way for new projects and respond to the challenges of heritage and adaptive reuse typology buildings.

7.1 AWARDS

Summary of awards relevant to the project are:

2008: UrbanTaskforce of Australia Residential Development Winner Kirribilli Club/Alchemy Apartments

2007: IDEA awards Interior Office Design Commendation Salmat

2005: National Trust Heritage Award Adaptive Reuse Commendation Former Ford Factory Campus Business Park

2004: National Trust Heritage Award Adaptive Reuse Commendation 11 Barrack Street Sydney

2003: RAIA NSW Conservation and Adaptive Reuse Commendation 11 Barrack Street, Sydney

Urban Taskforce Award Best Adaptive Re-Use in Development Winner Waratah Mills, Dulwich Hill

HIA Greensmart Awards Winner – Development of the Year Waratah Mills, Dulwich Hill

HIA NSW Housing Awards Winner – Resource Efficiency Waratah Mills, Dulwich Hill

UDIA NSW Urban Renewal Award-Waratah Mills

National Trust Heritage Award Adaptive Reuse-Waratah Mills

7.2 PUBLICATIONS

Nettletontribe has been featured in numerous publications. Recent publications and the projects featured are listed below.

Monument 2008:

Lifestyle Working Brookvale Project: "Offering a refreshing take on commercial strata offices-in which people can live with their external environment rather than exclusively from it-this is a surprising vision of the future of workspaces" quoted review Eoghan Lewis

Indesign 2008:

Sonic Health Care Project, Kirribilli club/ Alchemy Apartments

Written Interviews and Talks:

Our directors and team offer a wealth of design and commercial experience that is often sought after by various organisations and publications for feature articles or talks. Our directors Michael Morgan (managing director), Trevor Hamilton (projects director) and Jeremy Bishop (design director) participate in industry recognised talks and publications. Jeremy Bishop is a member of the NSW educational committee at the RAIA and participates in University activities in collaboration with teachers and students.



MERIT

nettletontribe

EOI: FACULTY OF ARCHITECTURE,
BUILDING AND PLANNING

May 2009

Page 7